

e-Briefing on Direct School Admission (DSA) matters

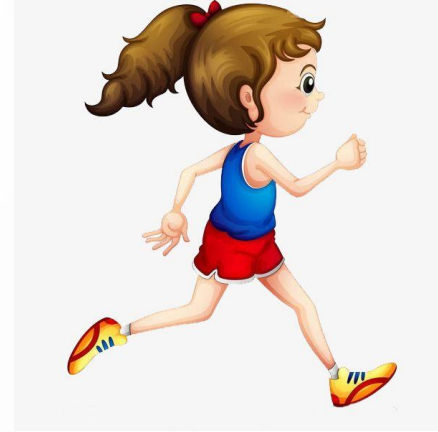


e-Briefing on Direct School Admission (DSA) matters



4G Direction

- **G**low from Within
- **G**row through Learning
- **G**et Green and Love Earth
- **G**o Forth & Strive Towards Our Goals



P5 BRIEFING ON DIRECT SCHOOL ADMISSION



24 May 2023

Direct School Admission (DSA) - Secondary

- DSA-Sec aims to:
 - Promote holistic education
 - Provides P6 students an opportunity to seek admission to a secondary school based on a diverse range of talents and achievements that may not be demonstrated at PSLE, e.g sports, aesthetics, student leadership, STEM & other talents

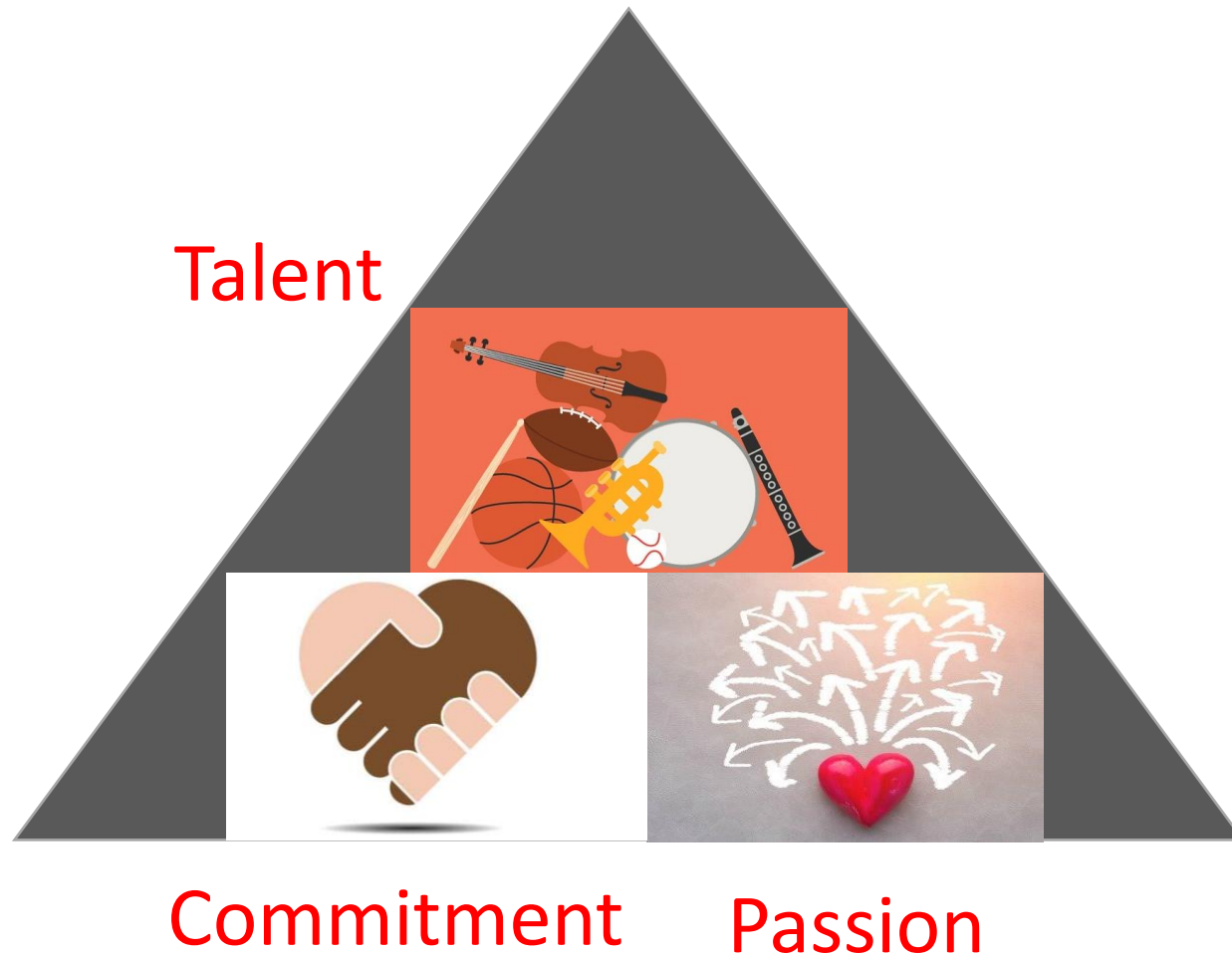
Direct School Admission (DSA) - Secondary

- Each participating school:
 - Offers distinctive programmes
 - Sets its own selection process and criteria to admit students with talents that can be further developed by these programmes
 - Offers places before release of PSLE results

SHOULD MY CHILD APPLY FOR DSA?



Should my child apply for DSA?



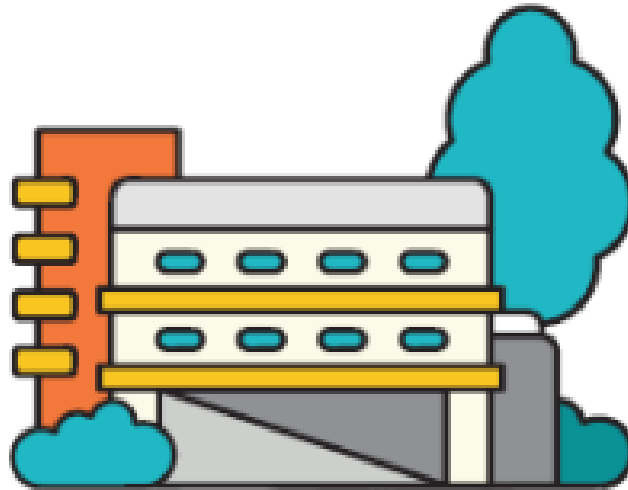
Yes, if she has **talent** in an area which the school offers the DSA in

And she is **passionate** about and **committed** to developing her strengths in that area in that school

Should my child apply for DSA?

- If your child is successfully allocated to a school through DSA-Sec, she will not be able to participate in the Secondary 1 Posting
- She will also not be able to seek a transfer to another school after the release of the PSLE results

WHICH SCHOOL SHOULD MY CHILD APPLY TO?



WHICH SCHOOL SHOULD MY CHILD APPLY TO?

Finding a good fit will help your child enjoy learning at an appropriate pace, and enable her to benefit from the school's overall programmes



When selecting a DSA-Sec school, consider the following:

- Schools with talent areas that match your child's strengths and interests
- Pace of learning
- Range of programmes offered by the school



Which school should my child apply to?

Matching

- Look for a school whose **programmes match your child's interests and talents.**
Schools are looking out for students whose interests and talents they can develop further
- Get the latest information about what each school offers by:
 - Visiting the MOE's DSA website : [Direct School Admission \(DSA-Sec\) | Ministry of Education \(https://www.moe.gov.sg/dsa-sec\)](https://www.moe.gov.sg/dsa-sec)
 - Visit school websites
 - Attend schools' e-Open Houses

Which school should my child apply to?

Academic Curriculum & Pace of learning

- Find out more about the school's academic standards

Overall range of programmes offered

- Other programmes available for holistic development of the students

How many schools can my child apply to?

- You can indicate up to three choices during the application.
- For each choice, you will need to choose a secondary school and a talent area from that school.
- Of the three choices, a maximum of two choices can be used to apply to the same school (i.e., under two different talent areas).

When can my child apply?

- In May 2024 when your child is in P6
- More information on the timeline is available at this link: <https://www.moe.gov.sg/dsa-sec>

HOW DO SEC SCHOOLS CHOOSE APPLICANTS?



How do Sec Schools choose applicants?

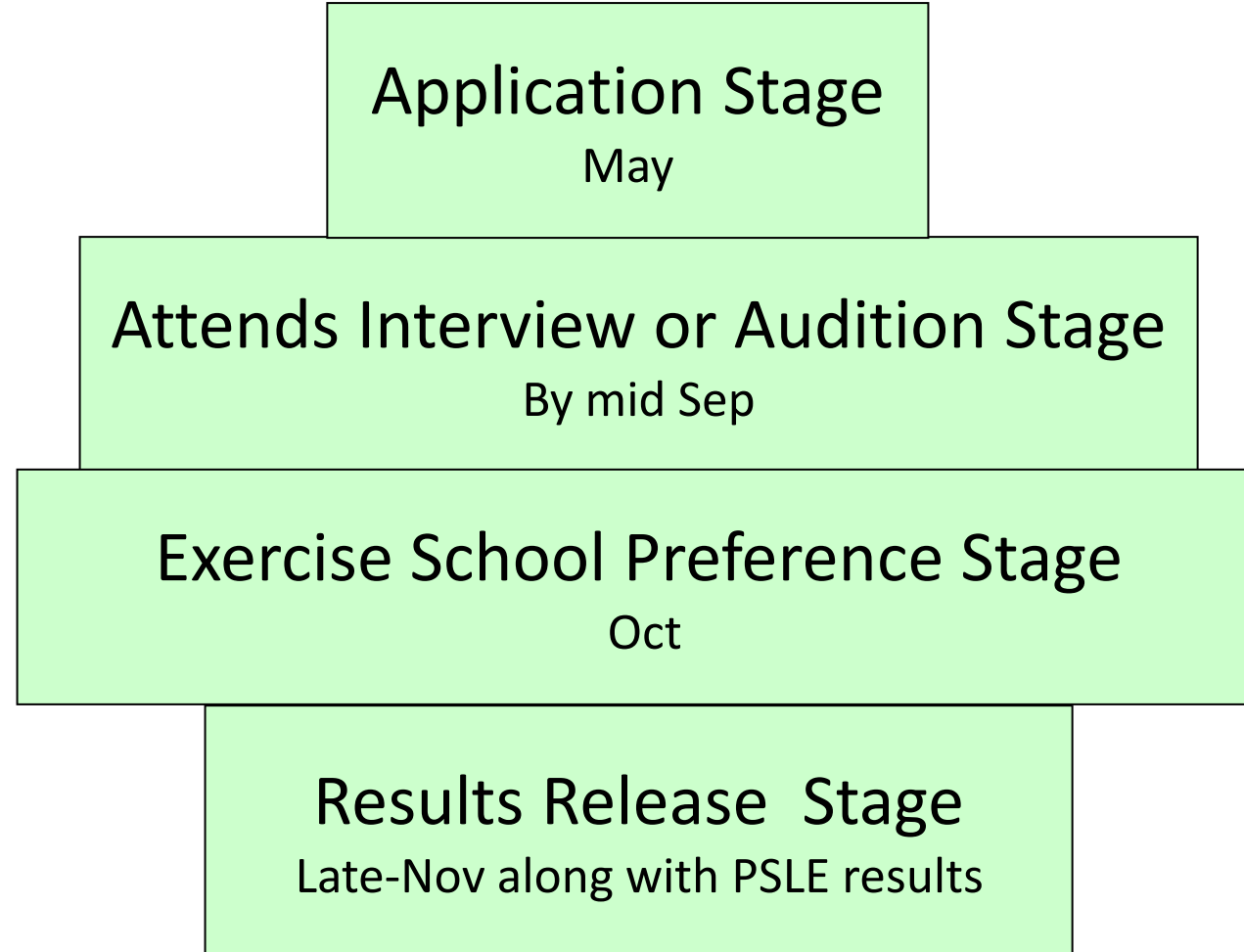
- Applicants' talents & / strengths
- Personal qualities
- Academic results – P5 & P6

THROUGH:

- Interviews
- Trials
- Tests
- Selection camps



Stages of the DSA-Sec Exercise



HOW DO I APPLY - DSA Portal

- One-stop DSA application portal (except for SOTA & Singapore Sports School)
- Period of acceptance for DSA applications will be about 3-4 weeks in May
- Parents can log in using Singpass

DSA Form

<https://www.moe.gov.sg/secondary/dsa/application>

TEST NAME 40562Z

BC/FIN TXXX375C | School Ai Tong School

Talent(s) and School(s)

Non-school based Awards/Activities

Contact Details

Review and Submit

View Application

Talent(s) and School(s)

TALENT(S)	SCHOOL(S)	SELECTED PROGRAMME (If applicable)
Basketball	Assumption English School	-
Basketball	Catholic High School	No Preference
Bilingual	Catholic High School	Integrated Programme

Non-school based Awards/Activities

PERIOD(S)	AWARD/ACTIVITY NAME	BRIEF DESCRIPTION
05/2018 - 06/2018	Speak Mandarin Campaign Talent Competition 2018	4th prize for Category C Family with eldest child between Primary 3 and 6.
06/2017 - Present	ABC Junior Basketball Club	Trained as a junior member since 2017.

Contact Details

CONTACT	NAME	EMAIL	CONTACT NUMBER
Main	Mr Poh	Poh@gmail.com	8123 4567

2023 DSA-Sec Template for Applicants studying in MOE Mainstream Schools

Instructions

You are encouraged to use a desktop or a laptop to fill in your application and use this template to help you prepare the relevant information before you log in to the DSA-Sec Portal. This will reduce your application time and minimise any risk of losing your entries due to connection issues. To avoid errors in your submission, use English language only.

You will need to fill in the following information for the DSA-Sec application:

Section I	Talent(s) and School(s)
Section II	Non-school based Awards/Activities (Optional)
Section III	Contact Details

Name of Child	
BC/FIN	

Section I: Talent(s) and School(s)

You can indicate up to 3 choices of talent areas and schools. The choice order does not matter.

Of the 3 choices, a maximum of 2 choices can be used to apply to the same school, for 2 different talent areas.

Note:

Under "Select Programme", you will need to choose "Integrated Programme", "Singapore-Cambridge Secondary Education Certificate" (SEC) Programme or "No Preference", only if the school offers both programmes for the selected talent area. Otherwise, no further action is required.

From the 2027 graduating cohort onwards, the SEC Programme will replace the GCE O- and N-Level programme under Full SBB. There are no changes to the DSA process. For more information on the SEC and Full SBB, click [here](#).

Talent	School	Select Programme (If applicable) (Please choose one only.)
--------	--------	--

DSA Portal

- Can indicate up to 3 choices. Max 2 choices in the same school in different talent areas
- Can add in 10 non-school based activities & achievements in 'Optional' Field
- No need to submit testimonials & hard copy documents
- Students' participation in school activities and leadership roles (P4 upwards) such as CCAs, Talentime, Value Ambassador, etc will be extracted from the school records. (Please check that these are accurate when the records are released in Jan 2024)

SELECTION OUTCOME

What are the possible DSA outcomes?

- **CO - Confirmed Offer** → The student has a place reserved in the school as long as she qualifies for a course the school offers [i.e. G1, G2 or G3].
- **WL - Waiting List** → This means the student will only be considered if other students with **Confirmed Offer** choose not to go to that school during the School Preference stage. Allocation will be based on students' rank on the school's waitlist.
- **Unsuccessful** → If the student is unsuccessful in all her applications, but still wish to enter the schools she applied for in the DSA, she can consider them again during the S1 Posting Exercise based on the PSLE results.

How are DSA places allocated?

Example: Confirmed Offer vs Being Waitlisted

John



John selected Marvel Secondary as his 1st choice. Marvel Secondary School placed John on the Waiting List.

Mary



Mary is given *Confirmed Offer* by Marvel Secondary.

Who will be considered for a place in Marvel Secondary?

Mary will be considered for a DSA place in Marvel Secondary, before John, as she has a *Confirmed Offer*.

If my child has a DSA Confirmed Offer, does it mean that her PSLE results will not matter?

- The PSLE Score will still be used to determine the secondary school posting group she is eligible for [i.e.G1, G2 and G3]
- Even if the student has a confirmed offer, she **must qualify for a posting group offered by the school** to be successfully admitted through the DSA.

Example:



Jane has a DSA confirmed offer given by Marvel Secondary School, which offers the G3 Course only.

However, Jane's PSLE results qualify her for the G2 course. Hence, Jane will **not** be able to go to Marvel Secondary School. She will take part in the S1 Posting Exercise instead.

AL Score Range

AL	Raw Mark Range
1	≥ 90
2	85 – 89
3	80 – 84
4	75 – 79
5	65 – 74
6	45 – 64
7	20 – 44
8	≤ 20

PSLE Scoring System & Posting Group for 2024

PSLE Score	Posting Group	Subject level for most subjects
4-20	3	G3
21 and 22	2 or 3	G2 or G3
23 and 24	2	G2
25	1 or 2	G1 or G2
26 - 30 (with AL 7 in EL and MA)	1	G1

School Information for DSA

<https://moe.gov.sg/schoolfinder>

<https://go.gov.sg/exploreschools>

SchoolFinder Tool



MySkillsFuture Portal



Home > [Is DSA for your child?](#)

Is DSA for your child?

21 MAY 2021



Related



Parent's Take on
DSA: "Let your child
take the lead"



Parent's take on
DSA: "Do what's
good for their self-
confidence"



Choosing the DSA
route



Is DSA for your
child?



Your grades do not
define you



SCHOOL BAG: The Educational News Site

- <https://www.schoolbag.edu.sg/story/is-dsa-for-your-child>
- <https://www.schoolbag.edu.sg/story/choosing-the-dsa-route>
- <https://www.schoolbag.edu.sg/story/parent-s-take-on-dsa-do-what-s-good-for-their-self-confidence>
- <https://www.schoolbag.edu.sg/story/parent-s-take-on-dsa-let-your-child-take-the-lead>



School Bag: DSA

IN SUMMARY :

- P6 students **have a choice** whether or not to participate in the DSA-Sec. If they choose not to participate in the DSA-Sec, they will participate in the Secondary One Posting Exercise after the release of the PSLE results.
- Students who opt for a school under DSA-Sec **must achieve PSLE results** that would enable them **to be eligible for admission to the posting group** being offered by their opted DSA-Sec schools.

IN SUMMARY :

- Students admitted to a school through DSA-Sec **will not be allowed** to participate in the annual Secondary One Posting Exercise. They will also **not be allowed to appeal** to other secondary schools
- Students who are admitted to the secondary schools because of their CCA achievements will be obliged to continue in that CCA

For more information, check this out :

<https://www.moe.gov.sg/dsa-sec>

<https://go.gov.sg/dsa-secfaqs>

Home-School Partnership

- Time for the girls to rest & relax
- Affirm efforts
- Positive Emotion
- Set realistic targets



A FLOWER DOES NOT THINK
OF COMPETING WITH THE
FLOWER NEXT TO IT.
IT JUST BLOOMS.





Thank You

If you have any question, please email us at
rgps@moe.edu.sg

Thank You.

